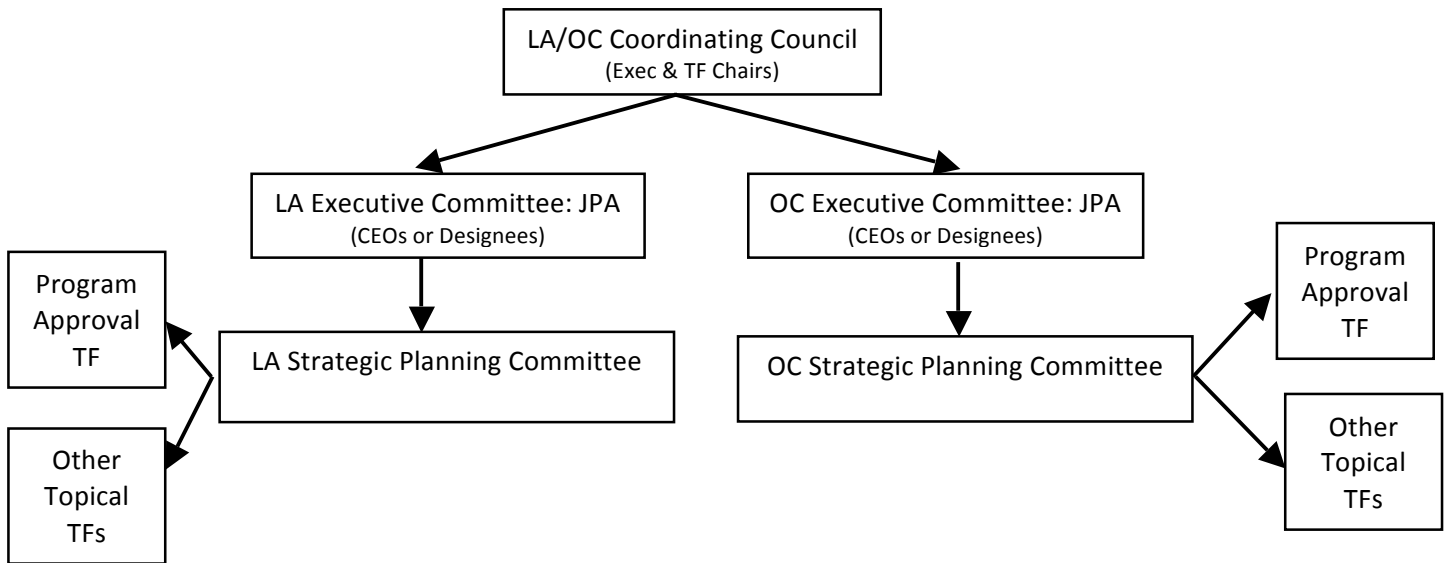


LAOCRC ORGANIZATIONAL MODEL—JOINT POWERS AUTHORITY (alternate proposal)

As proposed by Dr. Bill Scroggins, President and CEO of Mt. San Antonio College, member of EDPAC and Co-Chair of the LAOCRC Strategic Planning Committee



Done primarily at the County Level with the structure below: Exec, STC & TFs	Done primarily at the Coordinating Council level
Coordination with Workforce Boards and WIOA Planning	
Alignment with political entities-city and county	Facilitation of partnerships between colleges
Collaboration with school districts	
Collaboration with economic development and business	Website
Coordinating work of DSNs	Communication
Program approval	
Employment, direction, and evaluation of staff, Director, COE, DSN, TAP, etc.	Implementing initiatives launched by the Chancellor's Office such as data unlocked.
Fiscal decisions, both running Consortia and distributing funds to Districts	Aligning with the Strong Workforce recommendations.
Professional Development	Coordinate county level communication task force
Marketing done by County task force	Coordinate county level marketing task force
Communication done by County task force	

(The following has been prepared by Nick Kremer—LAOCRC Co-chair)

Joint Powers Authority

- A legal entity created by existing public authorities such as community college boards
- Separate board which is either representational or every member has a seat
 - Seat held by CEO or designee
- Agreement spells out authority, scope, voting, membership, etc.
- Agreement approved by each member's board
- Changes in agreement must be approved by all members
- JPA can have employees but then must have own hiring practices, personnel policies, wage structure etc. alternately JPA can associate with an existing entity such as a community college auxiliary foundation.

How JPAs in LA and Orange Counties might look/work?

Separate JPA formed by community college boards of each county.

- LA County --10 members
- Orange County--4 members

Steps to implement (short version)

- College boards negotiate and agree to an master agreement
- Each member board approves thus creating the JPA
- JPA selects a college foundation to work through
- JPA directs the work of the foundation in conjunction with a strategic planning committee
- College foundation hires appropriate personnel
- Personnel carry out the work
- Precise roles spelled out in the master agreement

Main features:

- The JPA would make an agreement with a community college foundation (auxiliary rather than independent foundation).
- All personnel including regional directors, DSNs and COE personnel would be employed directly by the JPA (college foundation) . Work directed by JPA Board and the SPC.
- Employees of auxiliary foundations are employees of the host college thus come under all college policies and rules for employment, fiscal, etc.
- Grant funds to other member colleges flow through the JPA
- JPA would direct the grant related activities of the foundation
- Strategic Planning Committee formed
- Specific task forces formed to conduct work (such as program approval)
- JPA responsible for performance

To learn more about JPAs:

https://en.wikipedia.org/wiki/Joint_powers_authority (concise description)

http://www.calafco.org/docs/Senate_LG_JPA_Report.pdf (comprehensive)

<http://doingwhatmatters.cccco.edu/Portals/6/docs/Joint%20Powers%20Agreement.pdf>